



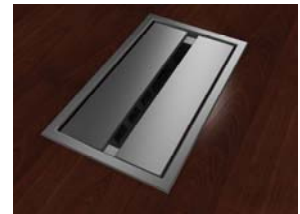
FOR IMMEDIATE RELEASE

**ELECTRI-CABLE ASSEMBLIES OF SHELTON, CT IS
2008 NORTHEAST REGIONAL MANUFACTURING EXCELLENCE AWARD
WINNER FROM THE ASSOCIATION FOR MANUFACTURING EXCELLENCE**

Toronto, Canada – October 22, 2008 -- In a competitive and increasingly challenging marketplace, seven companies have achieved a level of remarkable, sustained excellence this year and have been formally acknowledged by the Association for Manufacturing Excellence. At its International Lean Conference in Toronto, AME named seven Manufacturing Excellence Award Winners who have distinguished themselves in both competitiveness and profitability from 2007 to 2008. Electri-Cable Assemblies of Shelton, CT was named winner of AME's 2008 Northeast Regional Manufacturing Excellence Award. The company joins five other regional honorees as well as the 2008 National Winner this year.

"As always, our Manufacturing Excellence Award winners truly reflect the individual success stories of Lean," said AME's President, Ralph Keller. "No two Lean journeys are alike, and these impressive winners have distinguished themselves as the cream of the crop with focused determination and innovation in a year rocked by a challenging economy. The contributions of these selected companies reflect the very best in the manufacturing industry today."

Electri-Cable is a leading designer and manufacturer of power, data and electrical solutions for the office furniture industry. ECA received kudos in part for transitioning successfully to Lean practices without the use of outside consultants and working instead with its internal team to achieve common ground and teach problem-solving skills. Using Lean to learn from past experiences, Electri-Cable significantly increased revenues and reduced lead times. The company's power and data modules extends from high-end troughs used in conference room applications to simple power data grommets used in training table, library and educational applications. Its power data grommets can be customized with their large selection of data communications options from many of the leading connector manufacturers including Seimons, Avaya and Amp. Electri-Cable also offers a complete line of modular electrical wiring systems that can be easily integrated into many panel and furniture designs. Sixty employees occupy Shelton's 35,000 sq. ft. facility.



AME's Manufacturing Excellence Awards recognize and honor organizations that are using effective strategies to improve competitiveness and profitability. AME recognizes companies using a particularly effective improvement technique, which should be shared with other organizations to promote productivity and quality throughout North America. Regional winners are chosen from states in each of AME's nine geographic regions by AME judges, with the national winner named

-- more --

Electri-Cable Assemblies in Shelton, CT Wins 2008 Northeast Regional Manufacturing Excellence Award from the Association for Manufacturing Excellence, pg. 2 of 2

from among the regional winners. AME's regions include Great Lakes, Mid-Atlantic, Mid-Western, North Central, Northeastern, Southeastern, Southwestern, Western and Canadian. No regional winners were named in 2008 for either the Western or Great Lakes regions, respectively.

About the Association for Manufacturing Excellence

The Association for Manufacturing Excellence is a not-for-profit association of over 5,000 members dedicated to the sharing of knowledge on leading-edge topics that help companies stay competitive in a global marketplace. AME cultivates understanding, helps members analyze and exchange ideas on productivity methods, and teaches how these methods can be successfully applied in the pursuit of excellence. Since its founding in 1985, the Association for Manufacturing Excellence has expanded its focus beyond manufacturing to many functional areas of the enterprise and into many industries, all of which benefit from advanced management techniques. AME is practitioner-based, and its events and workshops focus on hands-on learning and knowledge exchange among peers. For more information visit www.ame.org or email info@ame.org.

About Electri-Cable

Electri-Cable is the world class leader in providing innovative electrical and data solutions to the office furniture industry. ECA was founded in April 1975 by David McCarthy, an Electrical Engineer. Through his vision and leadership ECA expanded from manufacturing wiring harnesses to providing electrical solutions for panel system furniture. As the demand for power and data in offices changed over the years, ECA began offering new products to meet those needs. This new line of work-surface products grew until now it encompasses hundreds of different style products for virtually any application. David McCarthy passed away in May of 2005 but his legacy lives on through his employees and products. In May of 2006 Premier Manufacturing Group, a partnership consisting of two long time employees and a third business associate purchased ECA. The new owners of ECA are committed to building on its strengths while also investing in its future. Commitments to product development, customer service and support and the manufacturing of quality products are their top priorities. These key elements have become the building blocks for ECA's future. ECA is located in Shelton Connecticut and is a member of IIDA. ECA's products are typically UL Listed, UR recognized or CSA certified. Visit www.electri-cable.com.

Media Contacts for ECA:

Kim Golden (203) 924-6617 (office) or kgolden@electri-cable.com

Media Contacts for AME:

Lisa Miceli Feliciano (860) 243-1447 (office); (860) 490-1253 (cell); (860) 859-1632 (home); lfeliciano@aomc.com OR Andrea Obston (860) 243-1447 (office); (860) 803-1155 (cell); (860) 653-2712 (home); aobston@aomc.com.

#